

## GROUND-BREAKING CEREMONY OF HAI LONG INDUSTRIAL PARK



## INVESTMENT PROMOTION ACTIVITIES



Signing a memorandum of understanding for investment between Hai Long Industrial Park and KJ Co., Ltd. - South Korea



Leaders of Hai Long Industrial Park attending an investment promotion conference in Taiwan



The Foxconn Group from Taiwan visited and surveyed Bao Minh Industrial Park.

The leaders of Hai Long Industrial Park attended an investment promotion conference in Shenzhen, China.

## I. THAI BINH - A NEW INVESTMENT DESTINATION

### 1 | GEOGRAPHICAL LOCATION



Thai Binh is a coastal province located in the Red River Delta region, within the economic belt of the Gulf of Tonkin and the influence area of the key economic growth triangle in the North: Hanoi - Hai Phong - Quang Ninh.



Thai Binh has a high economic growth rate. The economic structure has shifted significantly from agriculture to the service industry.



It consistently ranks among the top provinces in attracting Foreign Direct Investment (FDI), with a focus on the province's economic zones and industrial parks.

### 2 | ABUNDANT LABOR FORCE



Population is approximately **2,000,000** people



The proportion of working-age population is about **57%**



The number of trained laborers is approximately **650,000** people

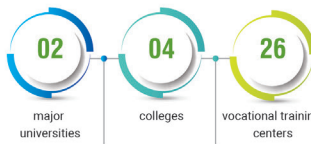


There are about **550,000** laborers in the agricultural sector (with a demand for transitioning to the industrial sector).

Additionally, there are approximately **2** million Thai Binh residents living and working across the country and abroad, who express a desire to return and work in their homeland.

### 3 | TRAINING

Within the province, there are



Each year, **33,500** students and skilled workers graduate from these institutions.

## II. THAI BINH ECONOMIC ZONE - THE DRIVING FORCE OF THAI BINH PROVINCE'S DEVELOPMENT

### 1 | GENERAL INTRODUCTION



Thai Binh Economic Zone covers an area of **30,583** hectares located in the districts of Thai Thuy and Tien Hai. It is an area with special investment preferences and abundant potential and investment advantages.



The Thai Binh Economic Zone is a bright spot in attracting FDI, with a focus on newly established industrial parks.



This is a comprehensive economic zone, multi-sectoral, including functional areas: power center area; industrial park clusters; port and port service area; urban-service area; tourism, resort, and entertainment area

### 2 | TRANSPORTATION INFRASTRUCTURE CONNECTION

- Connecting inter-provincial transportation via 2 coastal roads and the coastal expressway CT08 from the provinces of Thanh Hoa - Ninh Binh - Nam Dinh - Thai Binh - Hai Phong - Quang Ninh.

- Integrated and modern local transportation forms a network connecting industrial zones, urban areas, and service centers within the economic zones.



### 3 | CULTURAL AND SOCIAL INFRASTRUCTURE



- The economic zone is planned to develop industrial parks integrated with urban-service areas and existing residential areas.



- The direction of industrial economic development must be accompanied by preserving the local cultural identity and protecting the environment.



- Sustain and develop the coastal economy, tourism, and resort industry to meet the needs of investors when they come to work here.

### 4 | ELECTRICITY, CLEAN WATER, AND TELECOMMUNICATIONS SERVICES SUPPLY SYSTEM



**Thai Binh Thermal Power Plant:**

- It has a capacity to supply: **1,800** MW of electricity and is projected to expand to approximately **5,200** MW by 2030.
- The system provides clean water and telecommunication services readily available to meet the needs of investors.

### 5 | COMMITMENTS OF THAI BINH PROVINCE

Thai Binh always emphasizes that **"The effectiveness of investors is also the success of Thai Binh province"** and commits to:

- Ensuring a stable, transparent, and open investment environment for investors carrying out projects in the province.
- Providing timely support and resolving any difficulties related to procedures for investors.
- Ensuring the sufficient supply of electricity, water, and other social infrastructure needs.



## HAI LONG INDUSTRIAL PARK

Located in the Thai Binh Economic Zone - Tien Hai District - Thai Binh Province.

(+84) 961.866.515/ 0228.8622.666

www.hailongip.com

info@hailongip.com / info@baominhip.com





# HAI LONG INDUSTRIAL PARK - AN IDEAL DESTINATION FOR INVESTORS

## 1 | INTRODUCTION TO THE INDUSTRIAL PARK INFRASTRUCTURE DEVELOPER

### BAO MINH INDUSTRIAL PARKS INFRASTRUCTURE INVESTMENT JOINT STOCK COMPANY



**99** Officials, Workers, and Employees with high professional qualifications working at the company.



Over **17** years of experience in investing and operating industrial parks.



**02** large industrial parks located in 2 provinces: Nam Dinh and Thai Binh.

## 2 | HISTORY OF ESTABLISHMENT AND DEVELOPMENT OF THE INDUSTRIAL PARK INFRASTRUCTURE DEVELOPER

**2007** Establishment of Bao Minh Industrial Parks Infrastructure Investment Joint Stock Company.

**2010** Commencement of investment and construction of Bao Minh Industrial Park - Nam Dinh.

**2022** Bao Minh Industrial Park was honored by VCCI as one of the 12 exemplary industrial parks in Vietnam.

**2023** Completion of 100% land occupancy in Bao Minh Industrial Park (215ha) - Nam Dinh

**2023** Commencement of construction and attraction of investments in Hai Long Industrial Park (297ha) - Located in the Thai Binh Economic Zone - Thai Binh Province.

## 3 | PROJECTS



## 4 | LAYOUT OF HAI LONG INDUSTRIAL PARK



The total ground plan of Hai Long Industrial Park (Hai Long IP) covers an area of **297** hectares.

## 5 | TRANSPORTATION CONNECTIONS OF HAI LONG INDUSTRIAL PARK



## 6 | INFRASTRUCTURE IN THE INDUSTRIAL PARK

Hai Long Industrial Park is equipped with comprehensive, modern, and scientifically designed infrastructure. The constructions ensure aesthetics, greenery, cleanliness, and environmental protection.

### ELECTRICAL SYSTEM



The medium-voltage electrical system at **22kV** is supplied to the factories. Capacity: 2 units x 63 MVA.

### CLEAN WATER SUPPLY SYSTEM



The clean water plant within the industrial park has a capacity of: **40,000** m<sup>3</sup>/ day and night.

### WASTEWATER TREATMENT PLANT



The wastewater treatment plant has a capacity of **30,000** m<sup>3</sup>/day and night. The treated wastewater meets Grade A standards according to QCVN40:2011/BTNMT before being discharged into the environment.

### WORKER HOUSING



- There is a **10** hectare land fund for building housing for experts and workers.
- There is the Hai Long Service Urban Area, spanning **71** hectares adjacent to the industrial park, equipped with various amenities: schools, medical centers, sports facilities (swimming pool, football field).

## 7 | TAX INCENTIVE POLICIES



• **Corporate Income Tax: 10%** for the first **15** years, including: exemption for the first **4** years, a 5% tax rate for the next **9** years, and 10% for the subsequent 2 years.

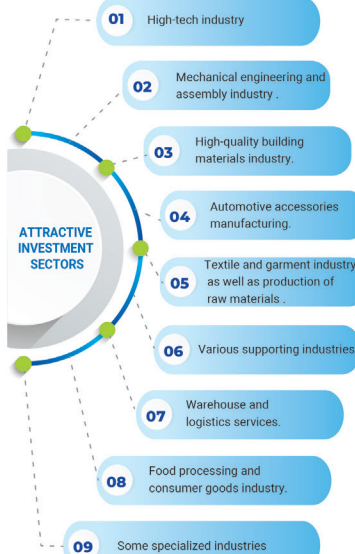
| YEAR                                       | 1   | 2 | 3 | 4  | 5 | 6 | 7 | 8 | 9 | 10  | 11 | 12 | 13 | 14 | 15 |
|--|-----|---|---|----|---|---|---|---|---|-----|----|----|----|----|----|
| Corporate Income Tax                       | 10% |   |   |    |   |   |   |   |   |     |    |    |    |    |    |
| Calculated from the year of taxable income | 0%  |   |   | 5% |   |   |   |   |   | 10% |    |    |    |    |    |

Exemption from import duties for imported goods used for fixed asset creation, as well as for materials, supplies, and components for a period of 5 years.

VAT exemption for export processing enterprises (EPEs).

**15-year** rent exemption annually (Until **2038**).

## 8 | ATTRACTIVE INVESTMENT SECTORS



## 9 | COMMITMENTS OF THE INDUSTRIAL PARK TO SECONDARY INVESTORS



Constructing green, synchronized, and modern infrastructure



Handing over land to investors as committed and on schedule.



Providing legal consultation regarding investment procedures



Ensuring an eco-friendly production environment, enhancing community health



Supplying electricity, water, and wastewater treatment



Ensuring security, order, and safety for production



Scan the code to initiate the document download

